



PHOTOSHOP FEATURES

How to use the Gradient tool in Adobe Photoshop.

Add gradients to your designs to create subtle color shifts and layered effects.

Free trial

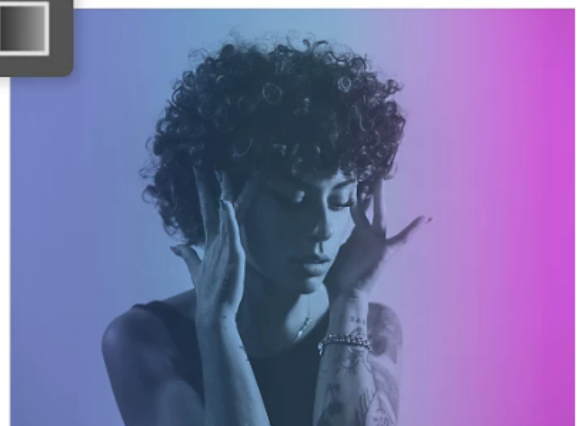
Buy now

What is the Gradient tool in Photoshop?

The Gradient tool is a fast way to create gradual changes of color and light across an image. You can use different types of gradients to blend with or [overlay](#) other images to create cool backdrops for logo designs, poster art, stylized profile photos, and more. Gradients can help draw focus to a point in your image by creating a glint of light or color that gradually fades into shadow.

Explore every shape of gradient.

The standard linear gradient moves gradually in a straight line from the point at which you click your mouse to wherever you drag and unclick it. In addition to the linear gradient, there are four other types of gradients in Photoshop. You can use them to make subtle changes or to create a [surreal photomontage](#).



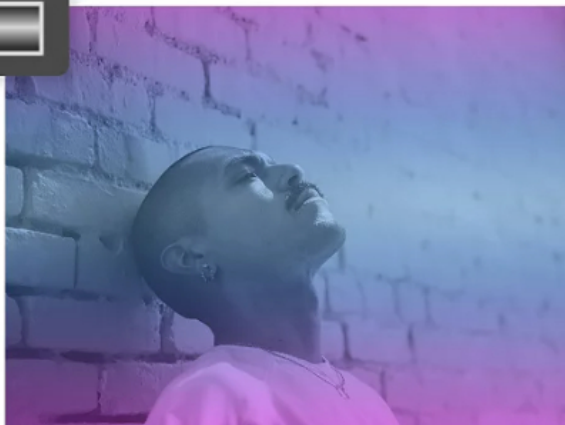
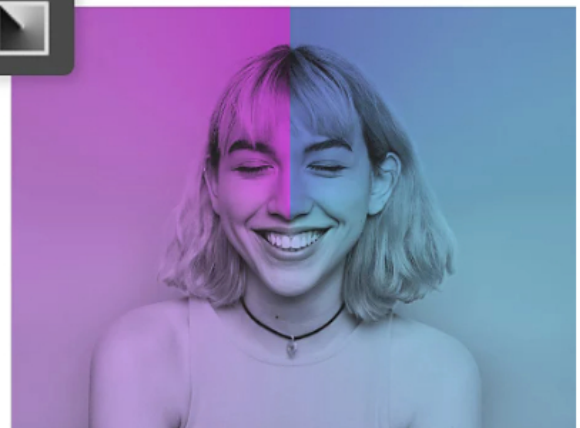


Radial gradients.

Form a circular pattern from starting point to end point, so the gradient fades or intensifies the farther you get from the center.

Angular gradients.

Create a visible angle as the gradient grows darker or lighter in a counterclockwise sweep around the starting point.

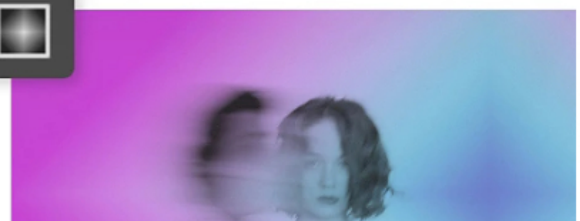


Reflected gradients.

Achieve a mirrored gradient effect by creating linear gradients on either side of the starting point.

Diamond gradients.

The color or shade changes from the middle out to four



corners in a diamond or pyramid pattern.



Start with Photoshop gradient presets.

Take advantage of many free gradient presets — from basic colors to clouds to iridescents — in the Gradients panel.

Discover all of the gradient presets.

Just click Window > Gradients in the top menu to open the Gradients panel. Then click the flyout menu in the top right corner and select Legacy Gradients to access many more useful presets.

Download even more free gradient presets.

Add rich color dimension to your compositions with these free [gradient presets](#) from a professional visual artist and graphic designer.

Make a custom gradient layer in Photoshop.

1. Choose where you want to create the gradient.

If you want the gradient to cover the whole canvas, create a new layer by clicking New > Layer in the top menu. If you want your gradient in the background, move the layer below the layers you want to show up in front of it.

2. Select the Gradient tool.

Click the Gradient icon (a rectangle with a gray gradient inside) in the toolbar or press G. You can also find it by clicking and holding the Paint Bucket tool to expand the tool menu.

3. Select the gradient shape and color.

In the options bar, choose from linear, radial, angular, reflected, and diamond. You can pick the colors of your gradient with the color picker in the toolbar, choose colors from your own swatches, or choose presets.

4. Find presets or make adjustments in the Gradient Editor.

Click the gradient icon on the top left of Photoshop to open the Gradient Editor dialog box. Choose presets and customize them or fine-tune your own gradient. If you'd like layers underneath it to show through in certain areas, move the opacity stops at the top of the color ribbon and reduce the opacity percentage in the box below it. Transparency will appear as a checkerboard pattern showing through the colors in the ribbon. You can also move the color stops on the bottom of the ribbon to change how the gradient colors will appear.

5. Make adjustments in the options bar

5. Make adjustments in the options bar.

Decide how you want your gradient to blend with the rest of your image. In the options bar at the top of the app, choose a [blending mode](#), the opacity percentage of your gradient, and other options. Reverse the order of colors in the gradient fill by checking Reverse. Create a smoother blend by checking Dither. To use a transparency mask for the gradient fill, select Transparency. Experiment with these and the Method settings to see how they look.

6. Draw a line.

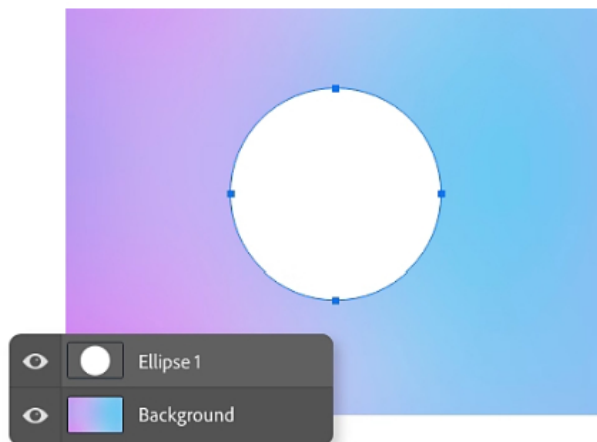
Click and hold to set the starting point of your gradient, moving the mouse in the direction you want the gradient to flow, then release the mouse. Longer lines will create more gradual transitions, while shorter lines will cause more abrupt changes between colors and shades.

7. Save your gradient to reuse it.

If you've created a gradient you like, you can save it to use later. Just type a name for your gradient into the Name box, then click the New button to add it to the Presets folder or drag the gradient to a different folder. If you want to create a brand-new group, right-click anywhere on the list of presets and select New Gradient Group.

Add a gradient to a shape in Photoshop.

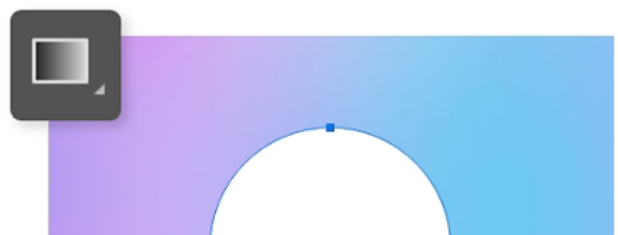
Follow these steps to create a gradient inside of a shape without altering the background.



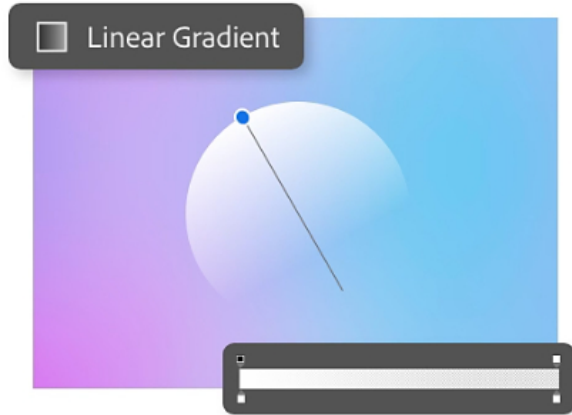
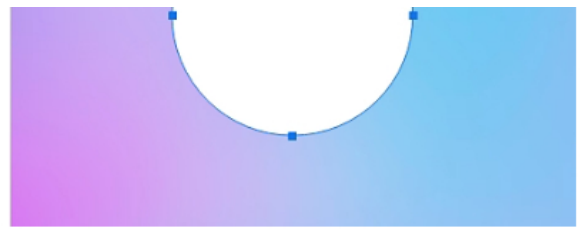
1. Select or create the area you want to fill.

Use the Layers panel to make sure you're on the right layer. To create a new shape, first create a new layer. Then use [shape tools](#) to draw your own shape.

2. Open the Gradient tool.



Click the Gradient icon in the toolbar or press G.



3. Choose your gradient color and style.

Follow steps 3–7 above to create a gradient inside the shape.



Do more with Adobe Photoshop.

[Start free trial](#)

[Learn more](#)

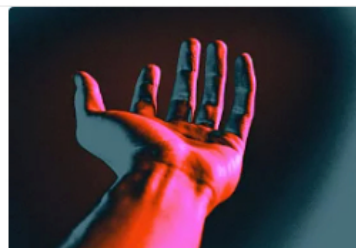
Experiment with gradient tutorials.

Follow step-by-step instructions for adding these color effects to your images.



Apply color to a high-contrast photo.

Learn how to create an artistic color design with a photo silhouette and gradient overlay



Transform photos with custom color effects.

Learn how to install and use these six free gradient maps with your own images

products and gradient overlays.

[Make the gradient](#)

with your own images.

[Get gradient maps](#)

Find the Creative Cloud plan that's right for you.

Photography (20GB)

US\$9.99/mo

Lightroom for desktop and mobile, Lightroom Classic, and Photoshop on desktop and iPad.

[Learn more](#)

Buy now

Adobe Photoshop Single App

US\$20.99/mo

Get Photoshop on desktop and iPad as part of Creative Cloud.

[Learn more](#)

Buy now

Creative Cloud All Apps

~~US\$54.99/mo~~ US\$39.99/mo

It's Cyber Monday savings time. Big time. Get over 25% off the ultimate creative toolkit until Dec 4. First year only. [See terms.](#)

[Learn more](#) | [See what's included](#)

Save now

Students and teachers

~~US\$54.99/mo~~ US\$15.99/mo

It's Cyber Monday savings time. Big time. Get 71% off Creative Cloud All Apps until Dec 4. First year only. [See terms.](#)

Save now

Purchase by phone: [800-585-0774](tel:800-585-0774)

Shop for

Creative Cloud
Photoshop
Adobe Express
Photography
Premiere Pro
Adobe Stock
Elements Family

Document Cloud
Acrobat
Acrobat Sign

Special offers
View plans and pricing
View all products

For business

Creative Cloud for teams
Creative Cloud for enterprise
Document Cloud for business

For education

Discounts for students and teachers
Schools and universities
Digital Learning Solutions

For mobile

Apps for iOS
Apps for Android

Experience Cloud

What is Experience Cloud?
Analytics
Experience Manager
Commerce
Marketo Engage
Workfront
Terms of Use

Support

Download and install
Help Center
Adobe Support Community
Enterprise Support
Genuine software

Resources

Adobe Blog
Adobe Developer

Adobe Account

Log in to your account

Adobe

About
Careers
Newsroom
Corporate responsibility
Investor Relations
Supply chain
Trust Center
Events
Diversity and inclusion
Integrity

Featured products



Adobe Acrobat Reader



Adobe Express



Photoshop



Illustrator

Change region



Copyright © 2022 Adobe. All rights reserved. /

[Privacy](#) / [Terms of Use](#) / [Cookie preferences](#) / [Do not sell my personal information](#) / [AdChoices](#)

