



Creativity ▾

Photoshop

Features ▾

Compare plans

Support ▾

Free trial

[Buy now](#)



[Home](#) / [Adobe Creative Cloud](#) / [Adobe Photoshop](#) / [Stamp effect](#)



PHOTOSHOP FEATURES

Create stamp effects in Adobe Photoshop.

Turn any image into a digital stamp to apply to your designs.

[Free trial](#)

[Buy now](#)

Emboss like a boss.

Make a convincing postal stamp, share your brand with the world, or just add emphasis to important information.



Create digital ink stamp effects that look real.

When you need to add realism to a letter, packaging, or anything else that should get stamped, add a stamp that looks like it was applied by hand with real ink and weathered over time.



Watermark your work.

Take ownership of your artwork and build your brand by adding a watermark [logo](#) to photos and composites.



Stamp a poster.

Whether you print your [poster](#) or share it on social media, add urgency to any event promotion with a big, authoritative stamp.

How to create a rubber stamp effect in Photoshop.

Follow this tutorial for beginners to achieve a rubber stamp look.

1. Open the PSD file you want to turn into a stamp.

You can turn any artwork, logo, or subject into a stamp, or you can use the Type tool to type new text you'd like to use.

2. Unlock the background layer.

In the Layers panel, click and drag the padlock down to the Trash icon.

3. Make your selection.

Use the smart selection tools to select the area you want to turn into a stamp. You can refine your selection with the brush tools.

4. Create a layer mask.

In the top menu, select **Layers > Layer Mask > Reveal All**. Or click the Add Layer Mask icon at

the bottom of the Layers panel. With the layer selected, right-click on the black-and-white layer mask thumbnail that appears next to your preview and select Apply Layer Mask.

5. Add a Stamp Effect filter.

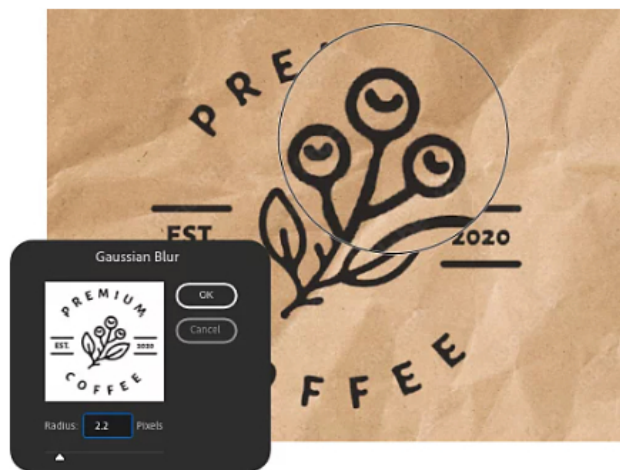
Before you apply the effect, select the foreground color and background color you want to use by clicking the color squares in the toolbar. Then, in the top menu, select Filter > Filter Gallery. Open the Sketch folder to find the Stamp effect.

6. Fine-tune the Stamp effect.

Move the Lightness and Smoothness sliders to adjust the intensity of the effect. You can always add an adjustment layer and play with brightness, contrast, hue, and saturation until you find the right combination.

7. Turn it into a Smart Object.

With a [Smart Object](#), you can bring a text layer, image layer, filters, and gradients together but still edit the effects. Hold Shift and click the layers. In the top menu, select Layer > Smart Objects > Convert to Smart Object.



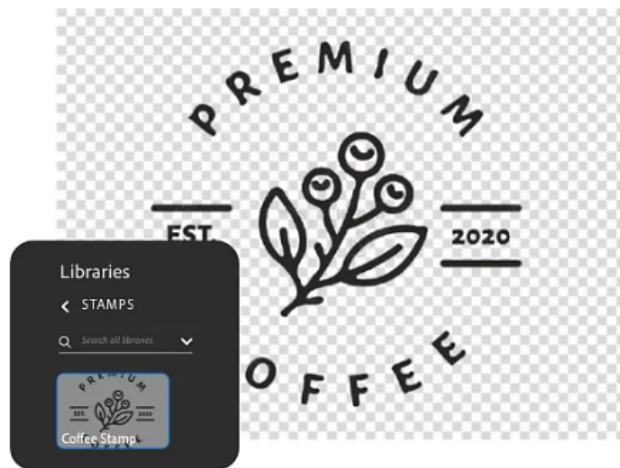
Blur it.

If the edges seem too crisp, make them look more realistic with a blur filter. Select Filter > Blur. Try [Motion Blur](#) or [Gaussian Blur](#), and move the slider to fine-tune the effect.

Make the background transparent.

Follow the directions above to add a Stamp Effect filter. Then click the Magic Eraser tool on the background pixels to make the background transparent. Save your [watermark](#) to add to another composite.





Add the stamp to your library.

Drag and drop your stamp layer to your [library](#) so you can use it again in Photoshop and other Creative Cloud apps.

Add a grunge effect to your stamp.

For added realism, make the stamp look weathered or hastily applied by adding a texture.

1. Select a texture.

You can find free textures on [Adobe Stock](#) and download them to your library.

2. Add that texture.

Copy the texture to your composite in a new layer.

3. Activate the layer mask thumbnail.

Click the layer mask thumbnail to activate it. Once your layer mask is active, you can copy pixels onto it.

4. Copy the pixels.

Click the thumbnail of the texture layer and click on the image to load the texture as a selection. Then select Ctrl+C or Command+C to copy the pixels.

5. Paste the pixels into the layer mask.

To make sure you paste the texture pixels in the layer mask, hold Alt on Windows or Option on Mac and click the layer mask thumbnail. Everything will turn white, because all you're seeing is the mask. Then select Ctrl+V on or Command+V to paste the textured pixels into the layer mask. Click the eye icon in the Layers panel to hide the texture thumbnail so you can see how your changes have affected the stamp. The stamp should now show more variation thanks to the texture.



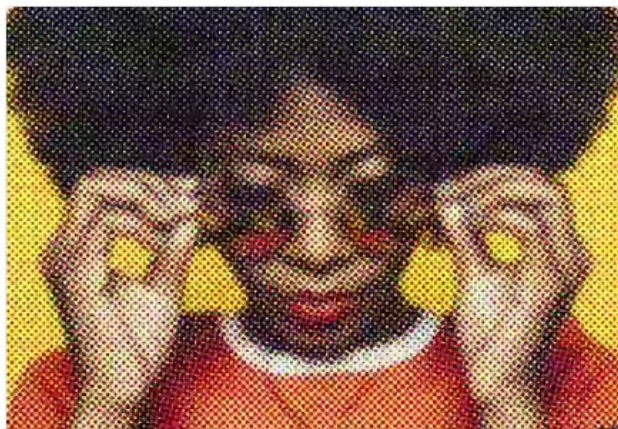
Do more with Adobe Photoshop.

Start free trial

[Learn more](#)

Discover other effects you can make in Photoshop.

Check out more Photoshop tutorials on quick ways to transform your images and grow your design skills.



Go retro with a color printed look.

Make your stamp look like it came out of an old printer by adding a halftone filter to create cool image or text effects.

[Add halftone effects](#)

Blend two images.

Learn how to combine two images in Photoshop to create a stunning design.

[Combine images](#)

Find the Creative Cloud plan that's right for you.

Photography (20GB)

US\$9.99/mo

Lightroom for desktop and mobile, Lightroom Classic, and Photoshop on desktop and iPad.

[Learn more](#)

Buy now

Adobe Photoshop Single App

US\$20.99/mo

Get Photoshop on desktop and iPad as part of Creative Cloud.

[Learn more](#)

Buy now

Creative Cloud All Apps

~~US\$54.99/mo~~ US\$39.99/mo

It's Cyber Monday savings time. Big time. Get over 25% off the ultimate creative toolkit until Dec 4. First year only. [See terms.](#)

[Learn more](#) | [See what's included](#)

Save now

Students and teachers

~~US\$54.99/mo~~ US\$15.99/mo

It's Cyber Monday savings time. Big time. Get 71% off Creative Cloud All Apps until Dec 4. First year only. [See terms.](#)

Save now

Purchase by phone: [800-585-0774](tel:800-585-0774)

Shop for

Creative Cloud
Photoshop
Adobe Express
Photography
Premiere Pro
Adobe Stock
Elements Family

Document Cloud
Acrobat
Acrobat Sign

Special offers
View plans and pricing
View all products

For business

Creative Cloud for teams
Creative Cloud for enterprise
Document Cloud for business

For education

Discounts for students and teachers
Schools and universities
Digital Learning Solutions

For mobile

Apps for iOS
Apps for Android

Experience Cloud

What is Experience Cloud?
Analytics
Experience Manager
Commerce
Marketo Engage
Workfront
Terms of Use

Support

Download and install
Help Center
Adobe Support Community
Enterprise Support
Genuine software

Resources

Adobe Blog
Adobe Developer





Adobe Account

Log in to your account

Adobe

About
Careers
Newsroom
Corporate responsibility
Investor Relations
Supply chain
Trust Center
Events
Diversity and inclusion
Integrity

Featured products

 Adobe Acrobat Reader  Adobe Express  Photoshop  Illustrator

 Change region



